

INSTALLATION AND ACTIVATION OF GSI3D V2011

The following steps describe how to install GSI3D V2011 and how to license your copy of the software. Please read and follow this document carefully. If you experience any difficulties with installation or licensing, please contact enquiries@bgs.ac.uk.

INSTALLATION

1. Download the GSI3D v2011 software ZIP file from the downloads page of the website www.gsi3d.org.uk onto the hard-drive of the computer.
2. Extract all the contents of the ZIP file onto the hard-drive of the computer; the location is not important and the files can be deleted after the installation is complete if desired.
3. Run the extracted **Setup.exe** file by double-clicking it. Follow the on-screen installation wizard, making sure to accept all of the default conditions and settings. This step will install GSI3D as a Demo version into your Program Files folder - usually **C:\Program Files\GSI3D v2011** on Windows XP computers. **If you are installing onto a Windows 7 computer also take note of Step 4 below.**
4. On Windows 7, make sure to run the Setup.exe as an Administrator. If you experience any problems during the install you should remove and then re-install making sure to choose an installation folder with no parentheses "(" or ")" in the path. On 64-bit Windows computers this could mean choosing a non-standard location for the installation as the standard folder is often suffixed " (x86)" which could cause installation problems on some machines.

LICENSE TYPES

GSI3D v2011 runs in one of three license modes:

1. Demo mode (requires no digital license activation)
2. Trial mode
3. Full mode

In GSI3D v2011 all non-Demo user licenses (i.e. both Trial and Full) are provided digitally via an activation procedure. Demo licenses require no digital activation.

DEMO LICENSE

When GSI3D is first installed it will run in Demo version. You will be asked to accept a Demo License as part of the installation process, and also each time GSI3D starts up. The Demo License only permits use of the software for evaluation purposes. Demo licenses do not

expire as this is the default mode for the GSI3D installation. Full terms and conditions are available at www.gsi3d.org.uk/termsandconditions.html

In Demo version, all screens are “watermarked” and GSI3D will restrict the amount of data that can be loaded to 5 geological units and 10 cross sections. This is flexible enough for the construction of small test 3D geological models to allow you to understand the functions of the software and assess whether it is fit for purpose. The Demo version only allows modelling projects to be created in an encrypted form which prevents you from sharing the results of evaluation work with other users of GSI3D. Encrypted evaluation work can be loaded into the full version of GSI3D, so if you join the Consortium you will be able to “unlock” your evaluation projects.

In Demo Mode the modelling functions are still available, but data export options are restricted. If you wish to evaluate the data export and data interoperability of GSI3D you should request a Trial License.

TRIAL LICENSE

Trial Licenses for GSI3D are short term licenses, usually of 30 days duration, which are available for software evaluation purposes only. The Trial version of GSI3D is less restricted than the Demo version and enables you to test the data import/export features of GSI3D more thoroughly and also allows the construction of as many geological unit and cross-section objects as you wish. Trial Licenses are usually granted on request for a period of 30 days. Note that the Trial version of GSI3D **cannot** read the encrypted projects created in the Demo version.

To request a Trial license, please contact enquiries@bgs.ac.uk. Trial licenses are activated in the same way as the Full license, as described below.

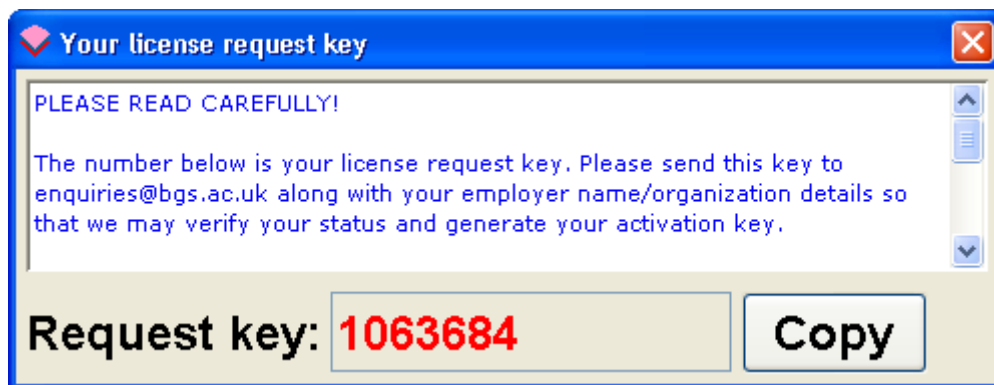
FULL LICENSE

The Full version of GSI3D is unrestricted and allows import/export of all data types. It also allows the import of encrypted Demo version project files. Licenses for the Full version are available only to GSI3D Research Consortium subscribers and are provided via a digital activation procedure, as detailed below:

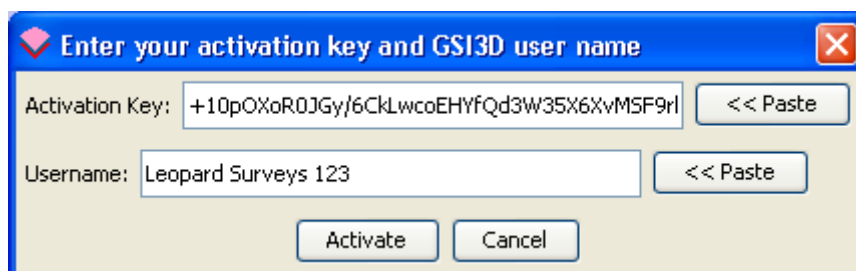
REQUESTING A DIGITAL LICENSE (FULL AND TRIAL)

1. Start GSI3D either from the Desktop shortcut or via **Start > Programs > GSI3D v2011**.
2. Inside GSI3D, choose **Help > License > Request a user key**. This will generate a numerical request key which should be copied and emailed to enquiries@bgs.ac.uk. **IMPORTANT:** please use your official organization email account to submit the request key to BGS Enquiries so that we are able to more easily verify your identity

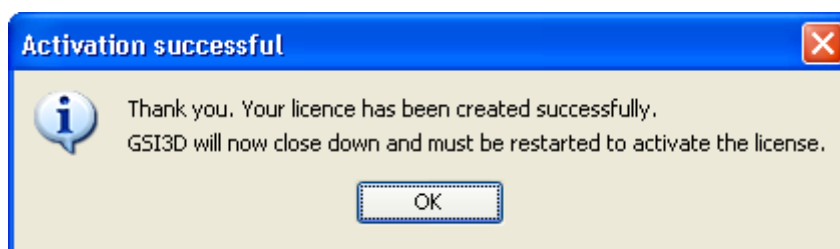
as a member/employee of a valid subscribing organization. You should also include your full name in the email.



3. Close down GSI3D and await your activation key and username.
4. The GSI3D Helpdesk at the BGS will respond directly to you with an email containing your activation key and software username. We will normally aim to do this within 1-2 working days. **IMPORTANT:** DO NOT GENERATE A NEW REQUEST KEY IN THE MEANTIME AS THIS WILL INVALIDATE THE ACTIVATION KEY AND USERNAME.
5. When you receive the activation email from the GSI3D Helpdesk, Start GSI3D and choose **Help > License > Activate user key**. Paste the activation key and the username from the activation email into the fields in the dialog box and click **Activate**:



6. If your license activation was successful you will see the following message. Clicking OK will close down GSI3D. When you restart the software your license will be active. If you have any difficult in activating your license, please re-try via **Help > License Activate user key**. If the activation still fails please contact the GSI3D Helpdesk by email.



Each license activation is specific to both the Windows user account and the physical computer. The following situations therefore apply:

- The initial software installation stage only needs to be carried out **once per computer**.
- License activations must be carried out **once per computer, per user account, per trial/subscription term**.
- So, two users logging into a single computer with a GSI3D installation on it, but using separate Windows logon accounts, will each require a separate license activation of GSI3D. Users who have not carried out the activation procedure will see GSI3D in Demo mode when it is started, even if another user has previously activated the software under their Windows account.
- A single user who needs to use GSI3D on a desktop AND a laptop/notebook computer will need to carry out two license activations, one per machine.
- All activations will expire at the end of the trial or membership subscription term. When this happens, new license activations will need to be requested by the individual users.

We have chosen to employ this method of granting digital licenses so that GSI3D can be used offline because the license is entirely self-contained. At the current time we have no mechanism for granting floating or flexible licenses. The overhead of the digital license request process is very small – the activation procedure itself takes less than 5 minutes for the user, and we will aim to respond to digital license activation requests within 24 hours on weekdays.